



N.



N.

Joseph 'N Bells

J.-K.-L.

"I remember how they would share the harness of the work mare using her reins to guide her slowly through the pasture toward the warmth of the barn beyond... and how they exuded a shyness that was endearing. Though Joseph spoke little, when he did it was with a soft careful calmness that made the listener sense an importance in his every word. These are just a few of the many memories that are in my mind as I complete this glimpse of the past that I am calling "Joseph 'N Bells" -Paul Murray-

N. Joseph 'N Bells Detail & Daniel Detail Canvas Giclee' Set Framed

21 x 26 only 150 \$4995 US/Cdn Now Pre-Issue \$3495* US/Cdn

J. Joseph 'N Bells **Original Canvas Giclee' Framed w/Hand painting, 38 x 36 only 150 \$3950 US/Cdn Pre-issue \$3450* US/Cdn

K. Joseph 'N Bells Canvas Giclee' Framed 20 x 19 380 issued \$1495 US/ \$1695 Cdn Now \$1095* US/ \$1295* Cdn

L. Joseph 'N Bells Paper Giclee' 16 x 15 \$525 US/Cdn Order Now 385*US/Cdn

Joseph 'N Bells Paper Giclee' Framed SS Burl \$795* US/ \$895* Cdn; Framed Classic Walnut-o or black \$695 US/ \$765 Cdn

"The sketching & the oil washes shown at the bottom of the painting are the beginnings of each work. The layers of transparent "Glazing" (a slow build up of color) eventually create and complete the painting. This technique has been handed down from masters of the 16th Century. Sometimes I feel it necessary to leave parts undone - I feel this lets the viewer become more a part of the piece." -Paul Murray-

Now you can enjoy this masterpiece in your home. We are currently scheduling our 2nd and 3rd museum exhibition in North America and Europe. We will keep you informed on the museum tours.

In this complex age, Paul Murray's interest is in the simple lives of his subjects. His desire is to preserve the heritage and traditions of our fore-bearers. This is not merely a nostalgic journey, but a chance to remember time-honored values. "The common theme in Murray's realism is the soul, and the greatest detail depicted in his art is emotion. Welcome to the antiquated art of soul searching" Jay Deimer-Louise

Coalminers' Kid

"Her big beautiful eyes connect you to her world. You can almost sense what she is thinking. Her soul seems to draw you inward to a place of bucolic innocence. Born in the coal fields of Eastern Kentucky, from a long line of miners, she'll break the tradition, & not be going down under. We think she'll break a lot of our hearts as well."

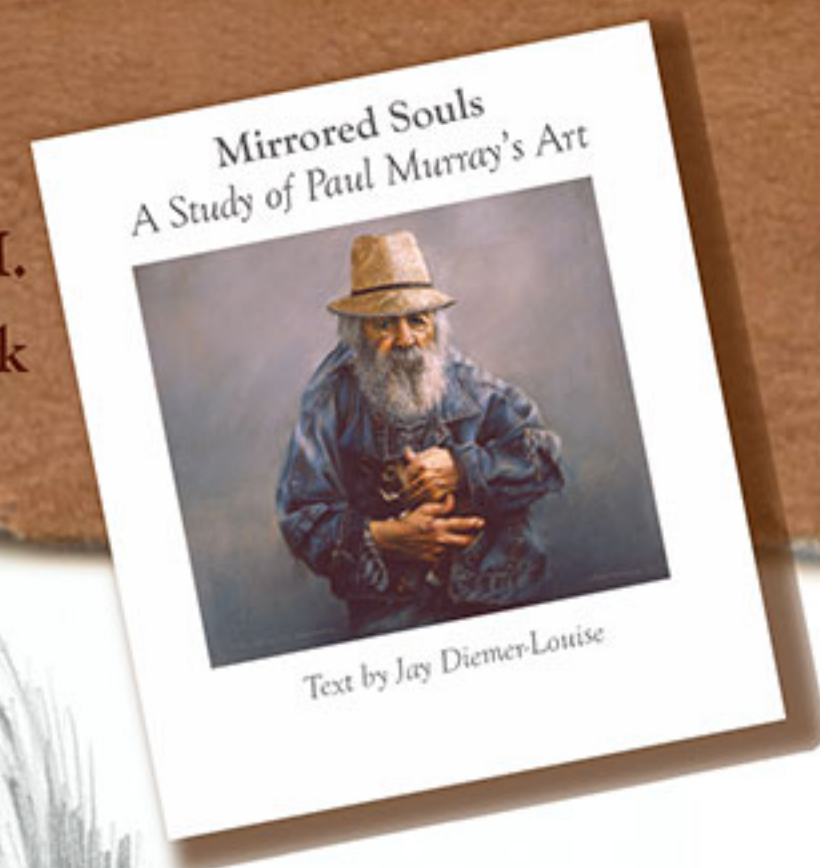
-Paul Murray-

Framed SS Burg. or gold \$445* US
 Fr. SS Walnut or golden oak \$495* US
 Fr. SS Silver-black \$645* US (shown here)
 Fr. Classic walnut-0 \$295* US

O.-P.-Q.



M.
 Hardcover Book



R.- S.

One Wish Paper Giclee'

Framed SS Gold or Burg. (shown here) \$495* US

Framed SS Walnut or golden oak \$545* US

Framed SS Silver-black \$695* US

Framed Classic Walnut-0 \$345* US

O. Coalminers' Kid **Original Paper Giclee' Framed w/Hand drawing 36 x 37 Issue 175 \$2550 US/Cdn Pre-issue \$1995*US/Cdn

R. One Wish **Original Paper Giclee' Framed w/Hand drawing 36 x 37 only 175 Issued \$2550 US/Cdn

P. Coalminers' Kid Canvas Giclee' Framed 23 x 27 only 250 issued \$1095 US/ \$1295 Cdn Pre-issue \$845 US/ \$995*Cdn

Q. Coalminers' Kid Paper Giclee' 12 x 15 \$195 US/Cdn Now Pre-Issue \$145*US/Cdn

S. One Wish Paper Giclee' 12 x 15 \$195 US/Cdn

**Original Giclee' =(ZHEEKlay)'- today's most advanced, accurate printing technology with the longest lightfast life and ultimate brilliance. This is intensified by one-of-a-kind hand painting by Paul Murray. Making each piece more full of life, an original of its own.

*Limited time offers; Fr. = framed; Framed SS = Signature Series frames specially designed & signed by the artist in suede, with UV glass & conservation framing.; Frames & sizes may vary from shown; Prices may change without notice; ***Some rules & exceptions may apply
 Published 09-09



A. Gunslinger paper giclee' (cropped) 13 x 21 \$245US/ \$275Cdn



B. Lil Miss giclee'paper 16 x 14 Secondary \$275 US
 C. Original** Giclee'Framed 36 x36 issue 175 \$2550US/Cdn

D. Sun & Sorrow canvas giclee' 7.5 x 7 \$145US/Cdn Pre-issue \$85

E. Shine Still paper giclee' 7.5 x 5 \$45US/ \$55Cdn (see more "Mirrored Souls -Attic Collection" on website)

F. Delta Rose Original Paper Giclee' ** 10 x 11 \$ 145US/ \$160 Cdn

** Original Giclee' add'l unique originally painted/drawn by the artist (see pg. 3**)

G. Red Maples paper giclee' 10 x 11 \$65US/ \$75Cdn

D.



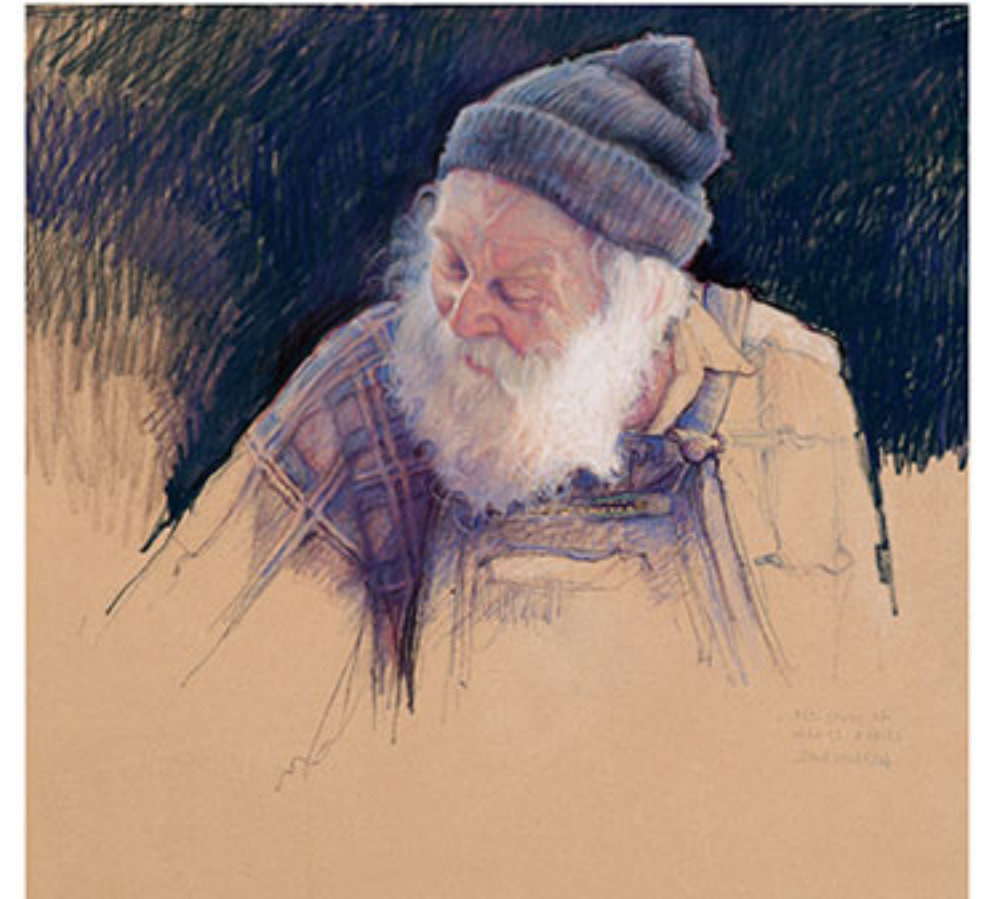
E.



F.



G.



H. Red & Dolly giclee' 14 x 21 \$285 US/Cdn Pre-issue \$235 US/Cdn



I. Hideaway giclee' \$85 US/ \$115 Cdn